

November 2024

Agriculture Water Management

Responsible Drainage in Resilient Watersheds

Introduction

Krystal Tendler

Executive Director, Agriculture
Water Management

Jillian Brown

Director, Program Advancement



Who We Are

- The Water Security Agency is a unique organization in Canada, bringing together all of government's core water management responsibilities
- Formed in 2012 to address water management responsibilities province-wide
- Agriculture Water Management is a core line of business



A large combine harvester is positioned in a field of golden wheat. The harvester is white and yellow, with 'CLAAS' and '750 LEITON' visible on its side. A person wearing a dark jacket and a cap is crouching in the foreground, looking towards the camera. The background shows a vast agricultural landscape under a clear sky.

Managing Agriculture Water

Saskatchewan is home to 40% of Canada's farmland and
10% of Canada's wetlands.



Drainage is Important



EFFICIENCY



FARM
PROFITABILITY



RESILIENCY



ECONOMIC
GROWTH

Wetlands are Important



PROTECT
WATER
QUALITY



PREVENT
FLOODING &
DROUGHT



PROVIDE
HABITAT



An aerial photograph showing a winding river that meanders through a landscape of agricultural fields and wetlands. The fields are a mix of brown and green, indicating different stages of crop growth or harvest. The river is a dark, winding line that cuts through the fields. In the background, there are rolling hills and a large body of water, possibly a reservoir or lake. The overall scene is a mix of natural and agricultural elements.

Drainage AND Wetlands

Co-exist in healthy agricultural landscapes.



Agriculture Water Management Strategy

Our **Mission:** Facilitate responsible drainage in resilient watersheds.



What is responsible drainage?



Planned & coordinated with neighbours



Technically sound design



Flow & erosion controls



Nutrient management



Healthy wetlands



WSA Drainage Approval



How do landowners get an approval?

01

Contact WSA and/or a Qualified Person

02

Work with neighbours on a coordinated plan

03

Obtain permission from downstream landowners

04

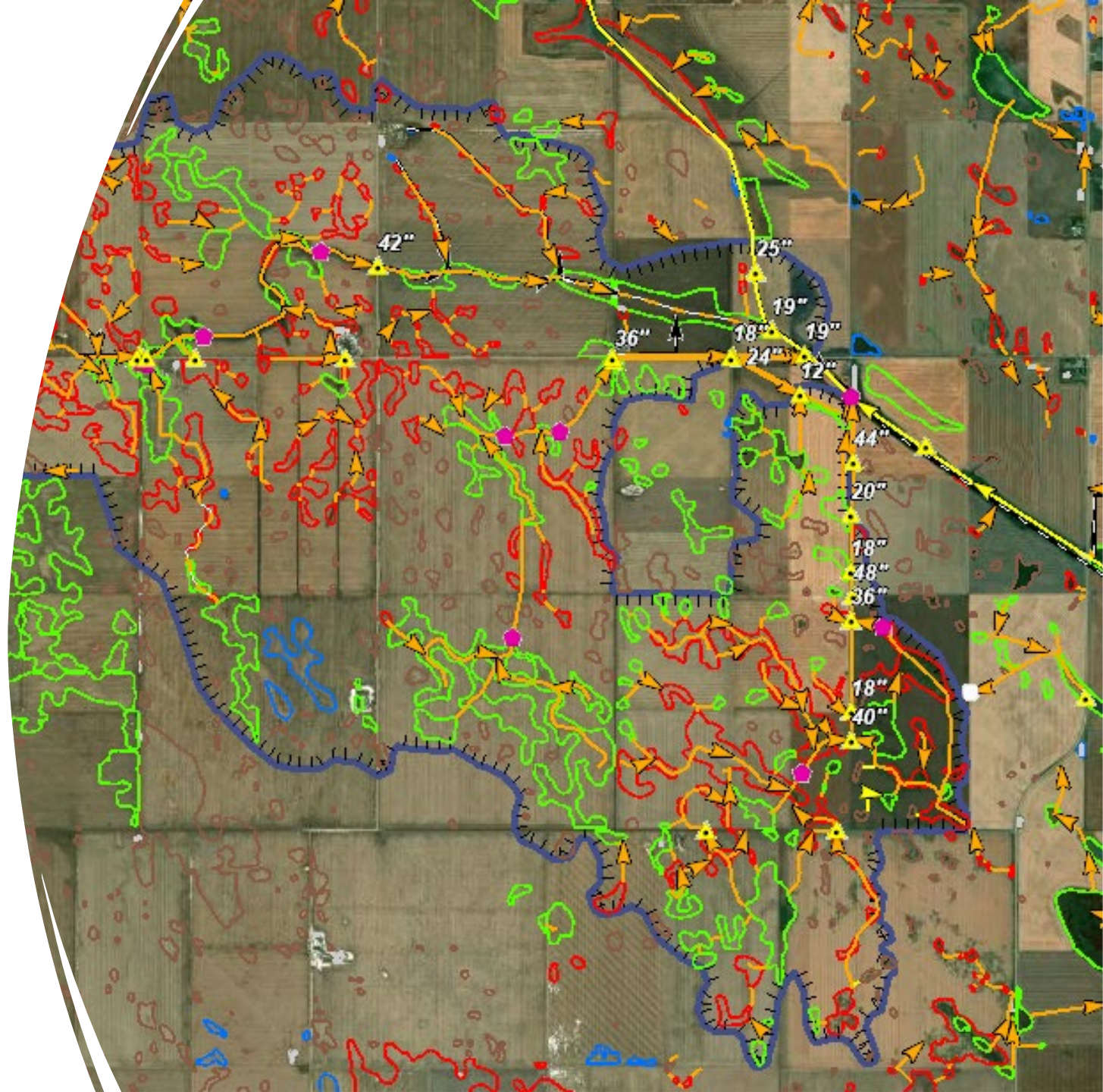
WSA reviews drainage application

05

Approval: Permits can range from 25-45 years

Network Approach

- Landowners work together to operate coordinated drainage projects that flow to an **adequate outlet**
- Submit one application for all drainage works
- Can be formalized into a Conservation & Development Area





Agriculture Water Stewardship

Saskatchewan farmers are stewards of over 4.6M acres of wetlands.

Why a Stewardship Policy?



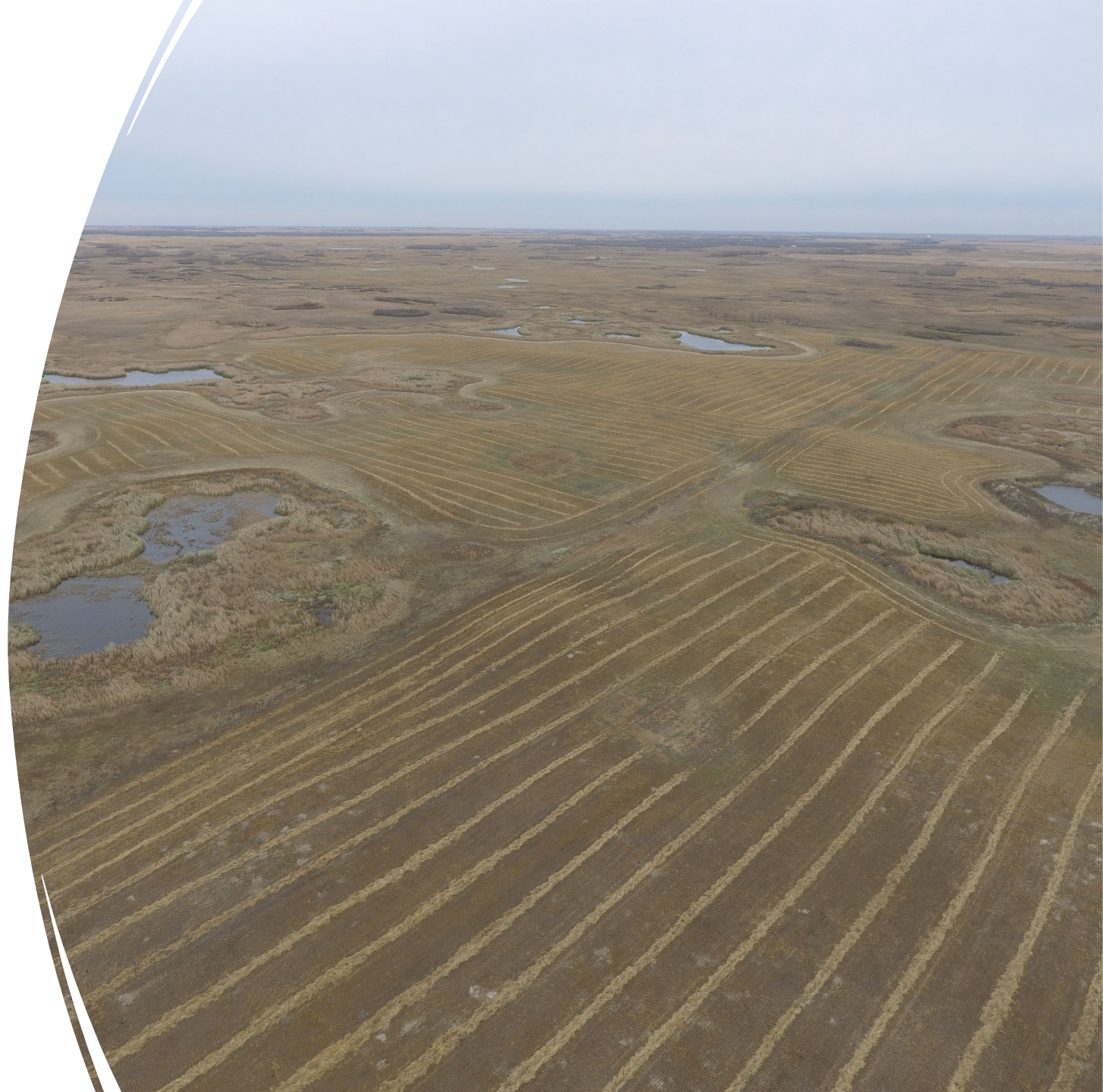
Wetlands are
Important on
Landscape



Address
Program Gap
Identified



Protect Against
Federal
Backstop
Legislation



What is a Stewardship Policy?

- Made-in-Saskatchewan-Approach
- Recognizes that producers are stewards of the land
- Focused on the regional landscape
- Will require landowners to retain some wetlands
- Implement in January 2025





Drainage Compliance

- WSA works with landowners to bring their works into compliance
- If a landowner is being impacted by unapproved drainage, they can file a Request for Assistance
 - Legislated mechanism
 - \$1,000 refundable fee
 - Now has prescribed timelines

Rural Municipalities Role in Ag Water Management



Manage natural flows through RM infrastructure (culverts/roads)



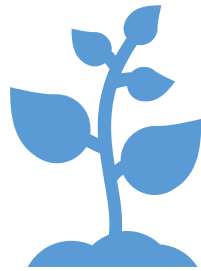
Provide Permission when RM infrastructure is part of a drainage approval



Construct drainage works in an emergency.



Funding Programs



Ag Water Management Fund

Funding to address barriers experienced by clients when working towards a drainage approval.

- On-Farm Qualified Persons
- Technical Design Solutions
- Mitigation and Rehabilitation



Channel Clearing & Drainage Project Maintenance

Assists RMs to mitigate flooding of roadways and land caused by obstructed creeks and channels.

- Funds the removal of debris, sediment, and beaver dams from natural watercourses, as well as eligible drainage projects.

Thank You



1-866-727-5420



wsask.ca