

Ministry of Highways

Transportation Legislation and Policy
Overview

saskatchewan.ca

Saskatchewan The logo for the province of Saskatchewan, featuring a stylized yellow and green design that resembles a sun or a stylized 'S'.

Overview

Ministry of Highways Introduction

Legislation and Policy

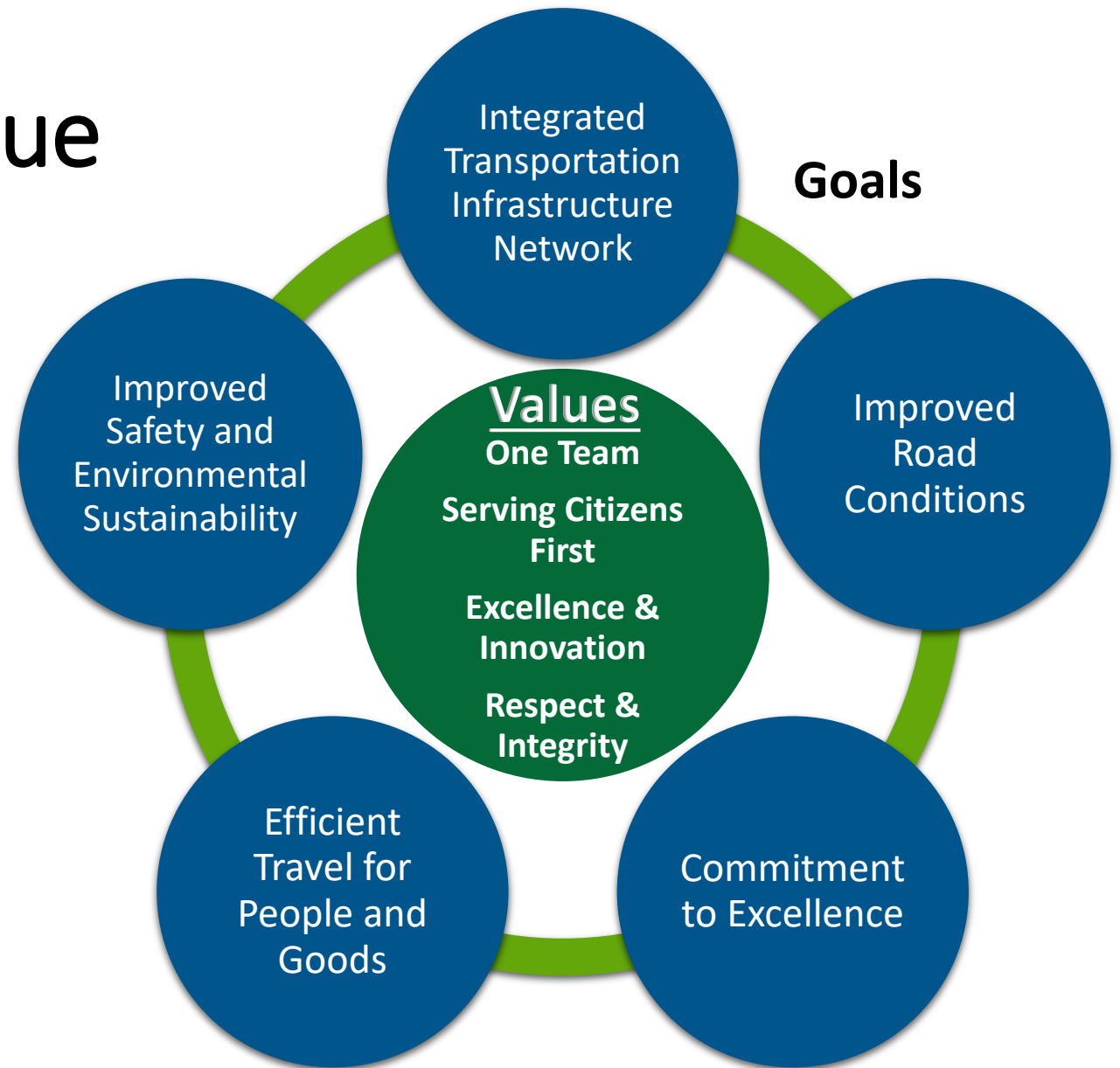
Resources

Contact Information

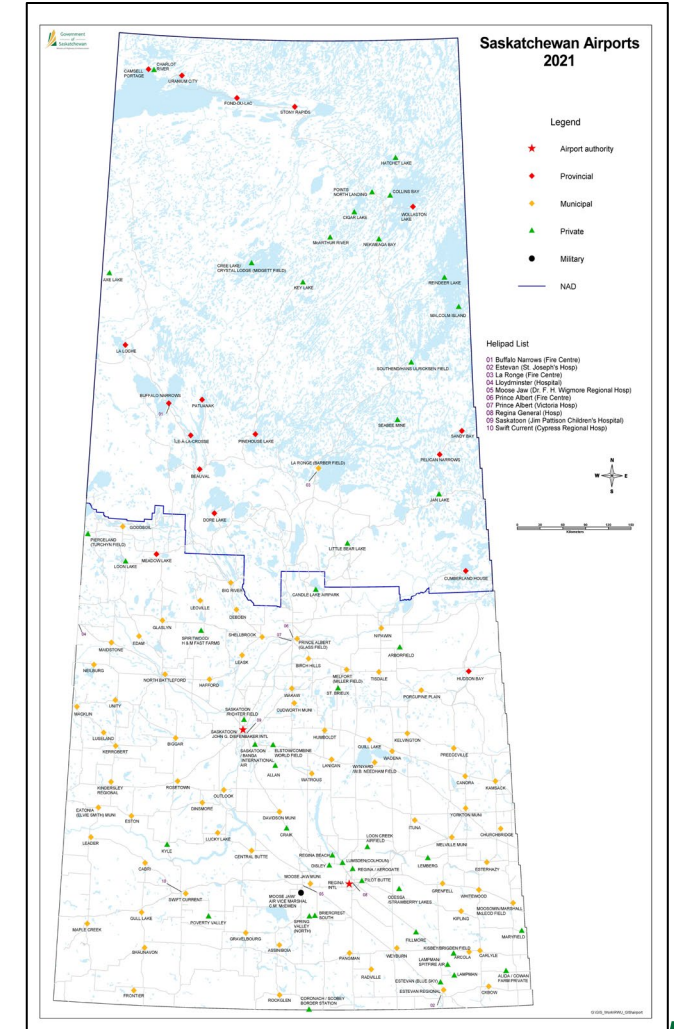
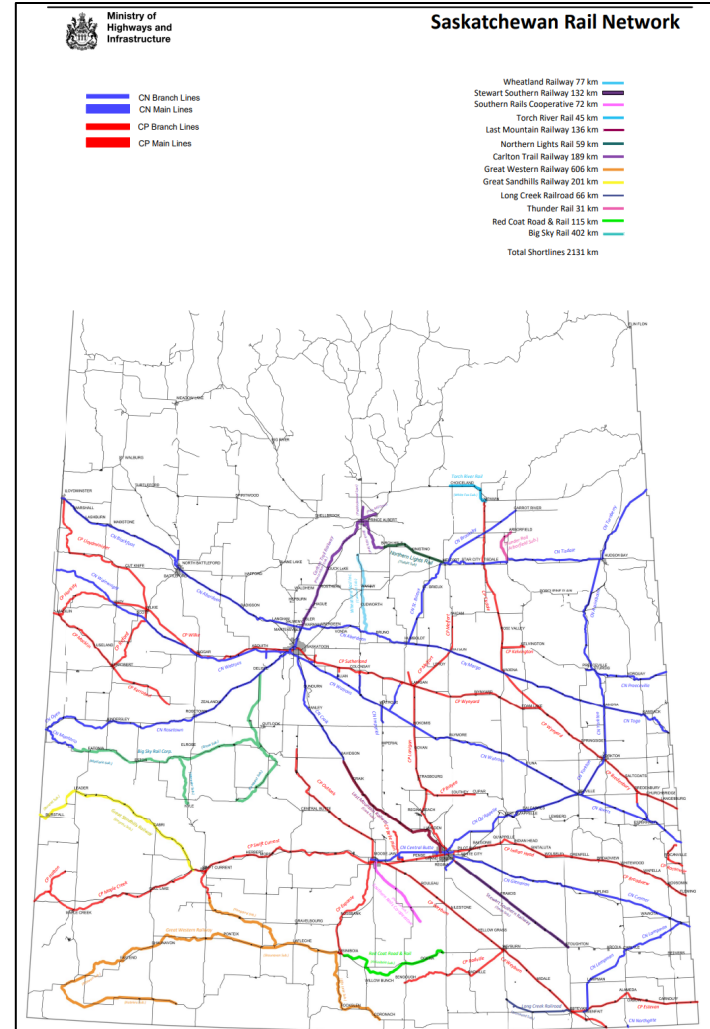
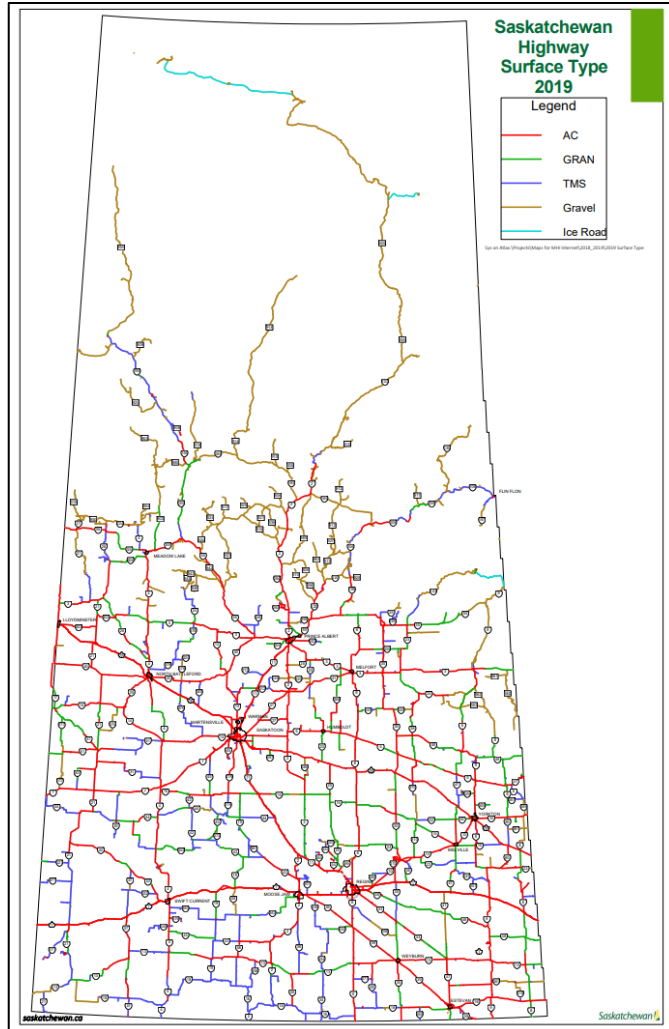
Ministry's Strategic Value

- **Vision:** Transportation – Connecting Saskatchewan to the World!
- **Mission:** To provide a safe, reliable transportation system that supports Saskatchewan's growth agenda and quality of life

We strive to deliver innovative sustainable infrastructure to serve the needs of the people of Saskatchewan



Provincial Transportation Network



Transportation Legislation and Policy

saskatchewan.ca

Saskatchewan The logo for the Government of Saskatchewan, featuring a stylized yellow and green design that resembles a sun or a stylized 'S'.

Transportation Legislation and Policy

The Transportation Policy and Programs Branch within the Ministry of Highways is responsible for:

The Highways and Transportation Act, 1997 and Regulations

The Dangerous Goods Transportation Act and Regulations

The Railway Act and Regulations

The Highways and Transportation Act, 1997

- The primary transportation legislation for the province of Saskatchewan
- Provides the Minister of Highways with a broad range of powers and authorities, including the ability to enter partnerships and agreements with all levels of government



The Highways and Transportation Act, 1997

Regulations:

The Highways and Transportation Act, 1997 provides the ability to create regulations, the following are a list of the regulations under the Act:

- The Vehicle Weight and Dimensions Regulations, 2010
- The Trip Inspection Regulations
- The Security of Loads Regulations, 2013
- Provincial Highways Designation Regulations, 1990
- Controlled Access Highways Regulations
- Highways and Transportation Act Regulations
- Railway Line (Short line) Financial Assistance Regulations
- Provincial Highway Sign Control Regulations
- Commercial Vehicles Hours of Service Regulations*

The Highways and Transportation Act, 1997

Minister Responsibility

- Managing transportation systems with a view to supporting the economic growth and social well-being of Saskatchewan
- Managing transportation systems:
 - to promote safety and efficiency
 - to reduce the costs of transportation
- Promoting transportation related goods and services
- Ensuring compliance with transport law
- Researching and investigating matters relating to transportation systems



The Highways and Transportation Act, 1997

Minister Powers

- Construct public improvements
- Design, construct, and manage transportation systems
- Conduct surveys and studies on public improvements and transportation systems
- Regulate matters relating to construction of utility works along public improvements
- Enter into agreements for construction of highways or public improvements, control management of highways or public improvements and any other matter necessary to carry out the intent of the Act
- Enter into transportation partnership agreements

The Highways and Transportation Act, 1997

Implications for Rural Municipalities

- Permitting Allowances/Fee Structure
- Agreements
- Minister's Orders - Spring Restrictions
- Trucking Programs
- Freedom of Passage
- Obstruction of Public Highway
- Official Signs
- Weight Enforcement Powers



The Vehicle Weight and Dimensions Regulations, 2010

Is the mechanism to protect the provincial highway infrastructure and provide safe movement of goods and people on our highway by setting weight and dimension limits for all vehicles on our road network



The Vehicle Weight and Dimensions Regulations, 2010

Implications for Rural Municipalities

- Weight limits for Provincial Road Network
- Defines types of vehicles that can operate on public roadways
- Defines Winter Weight Season
- Defines the requirements for escort/pilot vehicles
- 15 km rule



The Trip Inspection Regulations

Prescribes daily trip inspection requirements for commercial vehicles ensuring they are mechanically safe and facilitating the safe and efficient movement of people and goods

The Trip Inspection Regulations

Implications for Rural Municipalities

- Applies to all commercial vehicles operated by provincial and municipal governments, crown corporations, and commercial carriers on all public highways
 - Commercial Vehicle: a truck, a truck tractor or a trailer, or a combination of them that has a gross vehicle weight or registered gross vehicle weight of **more than 11,794 kilograms**



The Trip Inspection Regulations

Implications for Rural Municipalities:

- All commercial vehicles operating on a “public highway” must have a trip inspection/report completed every 24 hours a vehicle is operated and carried in the vehicle



The Trip Inspection Regulations

Implications for Rural Municipalities:

Exempt vehicles include:

- Two and three axle farm trucks **not** towing a trailer
- An emergency vehicle
- Road construction and maintenance equipment
- Farm equipment
- Vehicles transporting vehicles, goods, or people for disaster relief
- Recreational vehicles
- Vehicles registered in PC class



The Security of Loads Regulations, 2013

Prescribes cargo
securement
requirements for
commercial vehicles
ensuring the load
does not shift, move,
or spill onto the
roadway creating a
safe network to travel

The Security of Loads Regulations, 2013

Implications for Rural Municipalities

- Applies to all commercial vehicles operated by provincial and municipal governments, crown corporations, and commercial carriers on all public highways
- “commercial vehicle”
 - is used to transport goods; and
 - is a truck, truck tractor or trailer, or combination of them that has a registered gross vehicle weight of **more than 5,000 kg**



saskatchewan.ca



Saskatchewan!

The Security of Loads Regulations, 2013

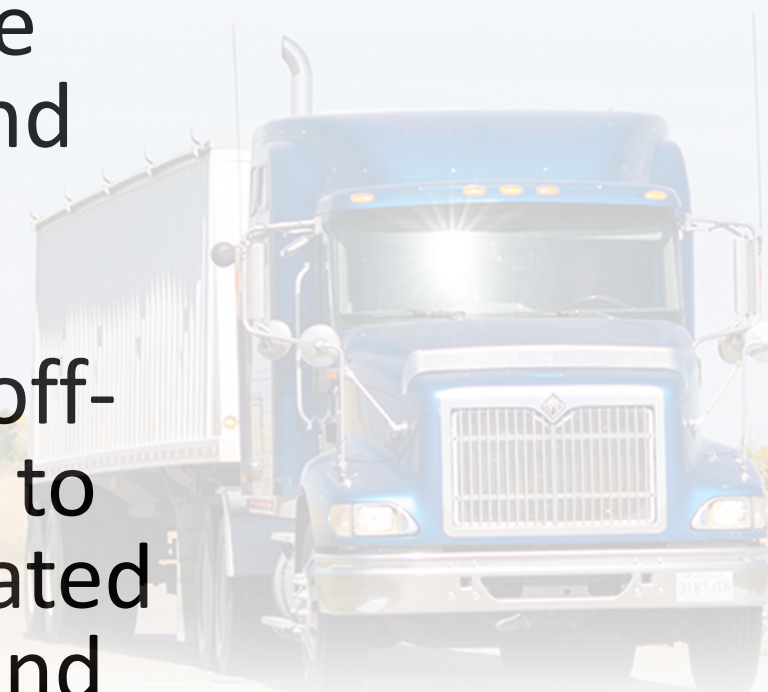
Implications for Rural Municipalities

- Definition of cargo - means all articles or material carried by a vehicle, including those used in the operation of the vehicle
- Cargo transported by a vehicle shall be contained, immobilized, or secured so that it cannot leak, spill, blow off, fall from, fall through, or otherwise be dislodged from the vehicle



The Commercial Vehicles Hours of Service Regulations

Prescribes limits for a commercial vehicle driver's on-duty and driving time and requires minimum periods of rest or off-duty time in order to reduce fatigue-related crashes, injuries, and fatalities



The Commercial Vehicles Hours of Service Regulations

Implications for Rural Municipalities

- Applies to all commercial vehicles operated by provincial and municipal governments, crown corporations, and commercial carriers on all public highways
- A commercial vehicle is:
 - A truck and trailer combination or truck and semi-trailer combination where the registered gross vehicle weight of the truck or towing unit **exceeds 5,000 kg**



The Commercial Vehicles Hours of Service Regulations

Implications for Rural Municipalities

- Required to track on-duty hours of employees who drive commercial vehicles
- Drivers are required to complete daily logs if operating outside of 160 km radius
- Drivers are restricted to 13 hours driving and 15 hours on-duty in a work shift

Exemptions:

- Two and three axle vehicles
- Farm vehicles
- Emergency vehicles
- Road construction equipment



The Provincial Highway Sign Control Regulations

Is the mechanism to regulate signs along provincial highways to ensure safety for the commuting traffic



The Dangerous Goods Transportation Act

Ensures public safety
by prescribing
requirements for the
handling and
transportation of
dangerous goods
throughout the
province



The Transportation of Dangerous Goods Act

Implications for Rural Municipalities

- Implements the Federal TDG Regulations
- Applies on public or private land to all dangerous goods when handled or transported
- Requires anyone who handles or transports dangerous goods to be trained unless exempted
- Dangerous goods means containment must be to standard, unless exempted
- Transporters must carry shipping documents unless exempted



The Railway Act

Ensures public safety by prescribing requirements for all provincial railways



The Railway Act

Implications for Rural Municipalities

- Notice of railways wanting to construct, acquire, or alter a railway
- Rail crossings construction and maintenance
- Fire and Emergency Response Plans



RESOURCES & CONTACTS

saskatchewan.ca

Saskatchewan! 

Resources

Government of Saskatchewan Website:

- www.Saskatchewan.ca/trucking
 - Links to moving farm equipment, trucking programs, and truck weight info.
- www.Saskatchewan.ca/highway-weights
 - Truck Weight Classification and Restrictions
 - Weight Classification Maps
 - Truckers Guide
 - Bridge Clearance Table
 - Truck Configurations
- www.Saskatchewan.ca/truckingweights
 - Seasonal Trucking Weights
 - Spring and Winter Weight Orders
 - Nine Month Primary Weights
 - Link to Minister Order's
- www.saskatchewan.ca/residents/transportation/rail
 - Provincial railway and short line information

saskatchewan.ca



Resources

Highway Hotline

- www.highwayhotline.gov.sk.ca
 - 2 Different Maps
 - Road Conditions and Construction Map
 - Restrictions Map – Spring and Winter Weight and Special weight Restrictions



Publications Saskatchewan

- <https://publications.saskatchewan.ca>
 - Legislation
 - Government Publications

SGI Permit Office

- www.sgi.sk.ca/permitoffice
 - Phone: 306-775-6969 (in Regina/outside Saskatchewan)
 - Toll free: 1-800-667-7575 (in Saskatchewan)
 - Fax: 306-775-6909
 - Email: sgipermitoffice@sgi.sk.ca



For More Information, Contact

Ministry of Highways

Transportation Regulations and Policy Inquiry Line

In Saskatchewan Toll Free – 1-866-933-5290

Outside Saskatchewan - 306-933-5290

Email: mhitrucking@gov.sk.ca

Rail Services

Email: rail.services@gov.sk.ca

Ministry of Highways – Customer Service Centre (General Inquiries)

1-844-SK-HIWAY (1-844-754-4929)

www.saskatchewan.ca/highways

Questions?

saskatchewan.ca