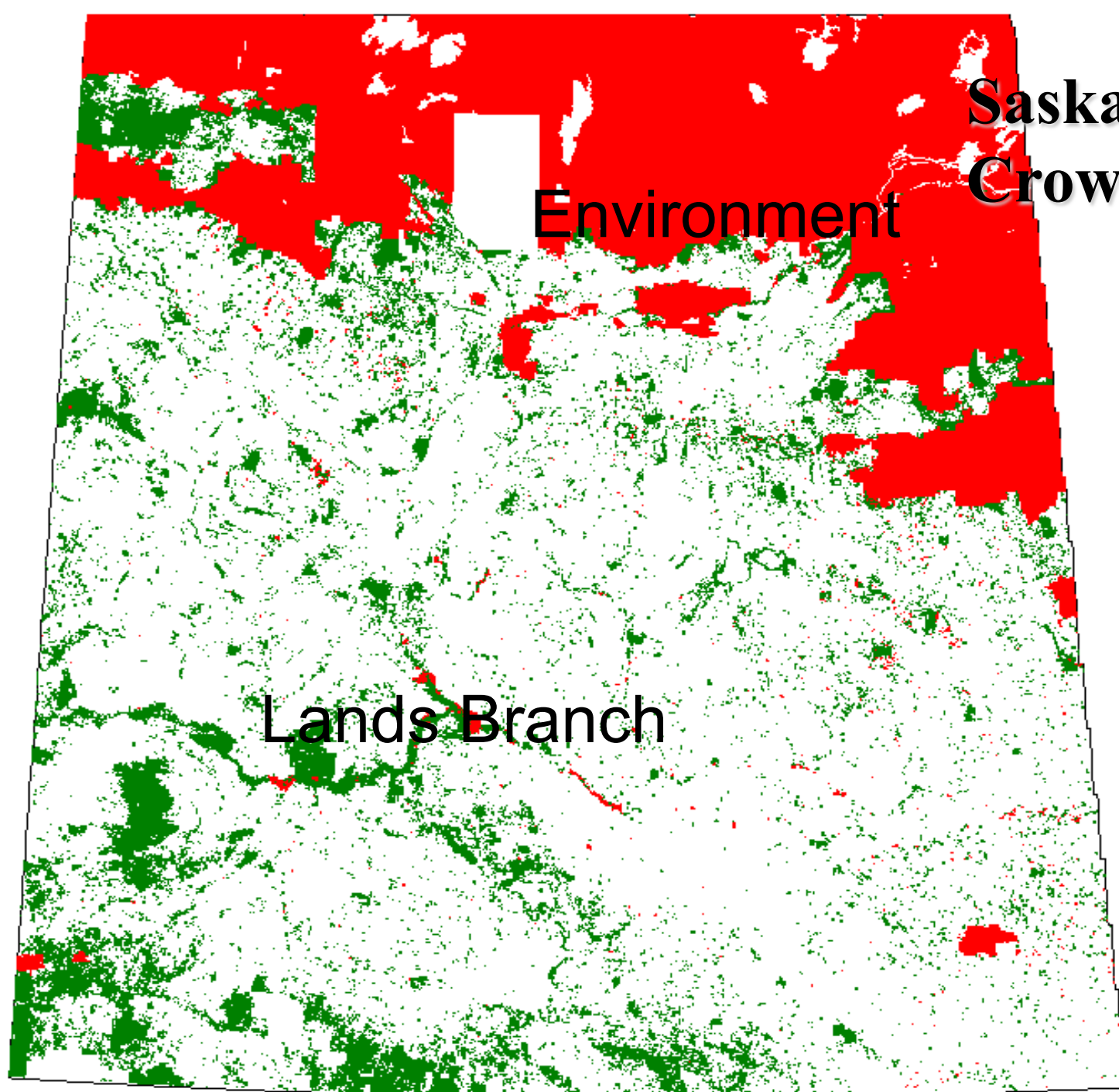




Saskatchewan Ministry of Agriculture

SARM convention 2015 South of Divide





**Saskatchewan
Crown Lands**

Environment

Lands Branch

A wide-angle photograph of a vast, flat landscape, likely a harvested agricultural field. The foreground is filled with dark, dense, and somewhat tangled vegetation, possibly remnants of a crop. Beyond this, the field extends to a flat horizon under a clear, light blue sky. The overall scene conveys a sense of openness and agricultural activity.

**Crown Cultivation
434,681 acres,
mostly former
SLBC**



**Grazing
7,500,000 acres by
April 2018**

Fed & Prov Community Pastures

Coop pastures, Private leases





Crown Land in SOD area:

- 10 PFRA.....508,749 acres
- 3 SPP.....140,768 acres
- 1 GNP...transferred..est100,000 acres
- 14 Coops.....134,493 acres
- 15 leases>10,000 acres.....262,000 acres
- Smaller leases.....316,460 acres
- Approx totals over.....1,462,470 acres

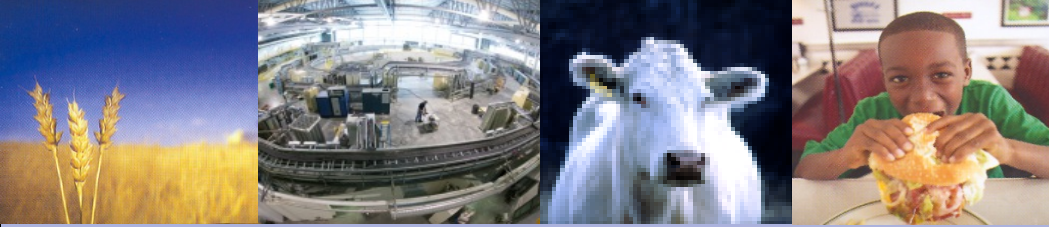


Multiple Uses





10, 000 surface leases by Apr 2018



Land Uses

- Multiple Uses of Crown lands in area.
- Grazing, dry and moist Br (.15-.35 aum/acre.)
- Gravel for Highways, RM's and contractors.
- Oil and gas operations
- Most land was included in WHPA
- Large intact native blocks are home to SAR.









Grazing theory

Ministry promotes:

- Proper use of grazing lands creates good ecological health for grasslands, wildlife and SAR.
- Carrying capacity for leases are set at 50% utilization rates (the take half, leave half theory.)
- Leases grazed at carrying capacity result in good range health/ good ecological health.



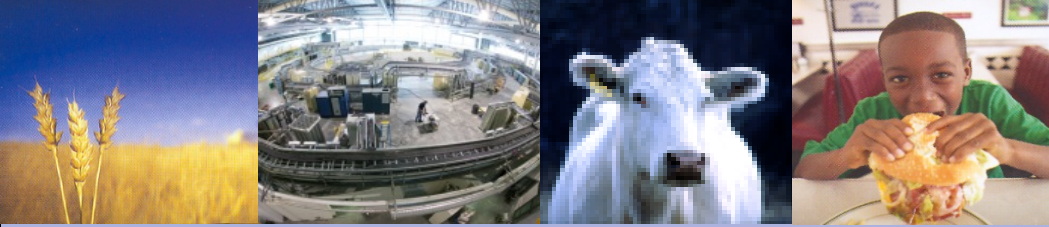


Petroleum Dev.

- Harmonized development with MOA and MOE.
- Project proposal review occurs at regional level.
- MOA interests include minimal disturbance when possible, reseeding with native species, timing, winter drilling, monitors, linear development and site specific issues.
- MOE (as above) also species concerns (CDC), timing, mitigation, well placement, water courses etc.







Development con't

- Basically when Province sells minerals; development will occur on the land. Dev is subject to Project proposals and mitigation methods agreed to by the proponent and gov't.
- Gravel is more intrusive, requires a project proposal and review. Can be turned down





Environmental Considerations

- Minimal disturbance installations are the most important issue for native prairie sites.
- involves preparation of an EPP that is jointly reviewed by MOE and MOA field staff, 10 day t/around.
- MOA's issues are same as a farmers, minimizing surface disturbances.
- MOA reviews EPP to ensure the company is utilizing minimal disturbance methods and may request an on site monitor





Restoration & Reclamation

- Minimal disturbance drilling with tanks
- Reseeding native stands to native seed mixes.
- Reseeding tame forage stands to tame forage
- Being careful not to introduce noxious weeds with equipment or in seed mixes.
- No drilling fluids spread on native pasture.
- No manure to be used as a soil amendment



Certificate of Seed Analysis

GOVERNMENT ACCREDITED LABORATORY

Accreditation No.
1068

This certifies that a sample of GROUND COVER MIXTURE

designated SITE 9 SAMPLE # 1
was received from:

Cert. No.
95-51688

JORGENSEN, TODD
4827-44 STREET
LLOYDMINSTER SK S9V 0G7

and was tested at:

20/20 Seed Labs Ltd.
Suite #1, 509 - 11 Ave.,
Nisku, Alberta Canada T9E 7N5
Tel 403-955-3435 Fax 403-955-3428

with the following results:

WEED SEEDS: No. PER 25.0 GRAMS

NOXIOUS WEED SEEDS	OTHER WEED SEEDS	OTHER CROPS SEEDS
Prohibited Noxious		
.0	Astragalus spp. 24.	
	Lamb's-quarters 72.	
	Wild buckwheat 8.	
Primary Noxious	Sedge 8.	
	Horsemustard 4.	
	Flaxseed 56.	
	Cruciferaeae spp. 40.	
Total Primary .0		
Secondary Noxious		
Stinkweed 96.0		



09.22.2005



Saskatchewan
Ministry of
Agriculture

www.agriculture.gov.sk.ca





05.17.2006



Saskatchewan
Ministry of
Agriculture

www.agriculture.gov.sk.ca



11.16.2006



Saskatchewan
Ministry of
Agriculture

www.agriculture.gov.sk.ca



11.16.2006



Saskatchewan
Ministry of
Agriculture

www.agriculture.gov.sk.ca



00.00.0000



Saskatchewan
Ministry of
Agriculture

www.agriculture.gov.sk.ca



01.05.2006



Saskatchewan
Ministry of
Agriculture

www.agriculture.gov.sk.ca



Saskatchewan
Ministry of
Agriculture

www.agriculture.gov.sk.ca



Crown Land Sales

- ELIGIBLE lands only, no gravel, no oil and gas,
- No sale on WHPA lands with HIGH ecological value
- Sale of MODERATE WHPA lands with CCE.
- CCE prevents breaking the land, residences, intensify livestock operations.
- CCE allows for limited gravel and oil and gas development





Sales con't

- Province wide 440 sale applications for WHPA
- 3941 WHPA parcels under review.
- Since fall 2008 sold 475,000 acres (non WHPA.)
- Grazing land \$300 acre and up





Lands /SOD

How does SOD affect our operations???

- For grazing, very little, grazing is compatible.
- Improvements such as fence and water may require further coordination with MOE?
- Oil and gas and pipelines will continue, project proposals will require continued diligence.
- Gravel operations will require more in depth project review??





Lands / SOD

- Land Development, pasture to cultivation, no effect haven't done any conversion in 20 yrs.
- Re doing existing tame forage would continue.
- Road widening (was allowed under WHPA.)?
- What are the stewardship opportunities under SOD ?





Thank You!!

