

# SARM Policy Department Update

Laurel Feltin – Director of Policy  
Shelley Kilbride – Policy Manager



# What We'll Cover Today

- Growing Forward 2
- Ag More Than Ever
- R&EDC Update
- Overweight Permitting
- Environment Code
- MMRP
- Legislative Review
- Bylaw Enforcement
- Club Root Bylaws and Policies



## Growing Forward 2 – Strategic Initiatives

- On April 11<sup>th</sup> Strategic Initiatives Programs were announced for 5 years under the New Growing Forward 2 Program.
- I want to make you aware of one's that are important to RMs and Producers today.



# Farm Ranch Water Infrastructure Program

## On-Farm Component

- Eligible projects include wells, dugouts, pipelines, relocation of livestock watering facilities, protecting well heads and well decommissioning.
- 50% of eligible costs to a max. of \$60,000 for program life

Eligibility requirements include:

- have an agricultural use for the water;
- earn a minimum of \$35,000 of gross farm income;
- operate a minimum of 320 acres of ag-land



# Farm Ranch Water Infrastructure Program

## Community Well Component

- Eligible projects include development of a new community well, including a tank loading facility, or decommission a well.
- Eligible applicants include RMs and First Nations bands
- 2/3rds of eligible costs to a max. of \$150,000 for program life

## Decommissioning a Well

- 90% of eligible costs to max. of \$10,000



# Farm Ranch Water Infrastructure Program

## Agri-business Component

- Funds to develop sustainable non-potable water supplies to meet needs of agri-businesses (wells, pipelines, dugouts, etc.)
- And to develop irrigation infrastructure outside an irrigation district.
- 50% of eligible costs to a max. \$150,000 for program life.

## Irrigation District In-fill Component

- Irrigation Districts with an in-fill development plan can receive up to 90% of costs to a max. of \$7 million.

The logo for SARM features the letters "SARM" in a bold, black, sans-serif font. The text is centered between two horizontal, curved lines that sweep upwards from the left and downwards from the right, creating a stylized, wing-like or swoosh effect around the text.

**SARM**

# Farm Stewardship Program

- Once producers have completed their EFP and received their Certificate of Endorsement, they can make application to the program.

**Now lets take a look at the eligible BMPs...**



# Land Management BMP's

- Protecting Riparian Areas
  - 75% of eligible costs max. of \$50,000
  - funds design of erosion control plan, purchasing/installing erosion control structures (rip-rap, culverts).
- Protecting High Risk Erodible and Saline Soils
  - 50% of eligible costs max. of \$5,000
  - funds design of soil management plan, cost of forage seed, seeding and spraying.





# Land Management BMP's

- Shelterbelt Establishment
  - Flat rate of \$600 per mile max. of \$5,000
  - funds site preparation, seedlings, planting, weed control.



# Irrigation Management BMP's

- Irrigation Management Plan
  - 50% of eligible costs max. of \$2,000
  - funds consulting services for detailed irrigation plans, drainage plans
- Irrigation Equipment Modification
  - 30% of eligible costs to a max. of \$10,000, funds modification to equipment making it more efficient
  - i.e.. low pressure nozzles, pressure regulators



# Livestock Site Management BMP's

- Relocation of Livestock Confinement Facilities
  - 60% of eligible costs max. of \$50,000
  - funds consulting services for detailed relocation plan, actual costs to relocate, decommissioning old site.
- Fencing to Protect Surface Water
  - 50 % of eligible costs to a maximum of \$10,000
  - funds material, installation, and labour for fencing to exclude livestock from water body.



# Livestock Site Management BMP's

- Farmyard Run-off Control
  - 50% of eligible costs max. of \$10,000
  - funds consultant costs to develop a plan, earthwork or materials/labour used to divert water.



# Manure Management BMP's

- Manure Storage Enhancements
  - 30% of eligible costs max. of \$50,000, funds consulting services for detailed plan, construct new storage sites, install improved liners, covers, composter in existing.
- Manure Application Equipment and Technologies
  - 30% of eligible costs to a maximum of \$30,000, funds equipment modifications such as injector openers, vertical beaters, etc.



# Pest Management BMP's

- Integrated Pest Management Information Collection and Planning
  - 30% of eligible costs max. of \$5,000, funds consulting services for detailed plan, insect monitoring equipment, weather monitoring equipment.
- Native Plant Re-establishment
  - 50% of eligible costs to a maximum of \$5,000, funds native grass seed, seeding, weed control.



# Precision Farming BMP's

- Variable Fertilizer Rate Technology
  - 30% of eligible costs max. of \$7,500, funds GPS linked variable rate controllers and valves, GPS information systems for zone mapping, consultant costs to create maps.



## Farm Stewardship Program – BMP's

- Now that you know what's available - Please see the website for more details before proceeding to apply.

[www.agriculture.gov.sk.ca/GrowingForward2](http://www.agriculture.gov.sk.ca/GrowingForward2)

Or call the Agriculture Knowledge Centre at: 1-866-457-2377

- Some BMP's require applicants to be pre-approved before applying.
- Some have interim deadlines and other requirements.





## Other programs of interest...

- Farm Business Development and Training
  - Helps farmers to develop business plans and skills:
  - 75% of eligible costs of training max. of \$10,000;
- Professional Agriculture Operators Training Program
  - provides training to address shortage of skilled labour
  - on farming operations. Details coming soon.



## For More Information on GF2 Programs

- Website: <http://www.agriculture.gov.sk.ca/GrowingForward2>
- Call the Agriculture Knowledge Centre at: 1-866-457-2377
- Or visit you nearest Regional Sk Agriculture Office



# Ag More Than Ever

- In November 2012 SARM was made aware of Farm Credit Canada's Ag More Than Ever campaign.
- Their campaign is all about improving the image of agriculture by having those involved share their stories to promote the benefits!
- SARM became an official partner in January 2013.
- Share one of their videos! Promote the message!



# R&EDC Update

## What we heard - RMs

- 1) Current upfront fees are insufficient to cover upfront development related costs;
- 2) need adequate funds to maintain and rehabilitate road infrastructure;
- 3) The current property assessment classes are limiting; and
- 4) RMs have a limited capacity to enforce road maintenance agreements.



# R&EDC Update

## What we heard - Industry

- 1) Need for consistent development processes and regional approaches;
- 2) Need for more educational opportunities, consultation and open dialogue between RMs and industry; and
- 3) Stakeholders must be fair and forthcoming, consistent and transparent



# R&EDC Update

- Oil and Gas Development Handbook for RM's
- *Rural Resources* e-Newsletter
- Online Overweight Permitting System
- Working with the Province
- Potash Development Resources



## Recommendations to the Province...

- Increase initial fees to developers
- Better current system for RMAs
- Additional funding for road infrastructure
- Allow for Sub-classing
- On-going Dialogue



# Province's Response to our Recommendations

- Internal Review
- Initial RMA rate increase
- Updating Legislation
- Collaboration





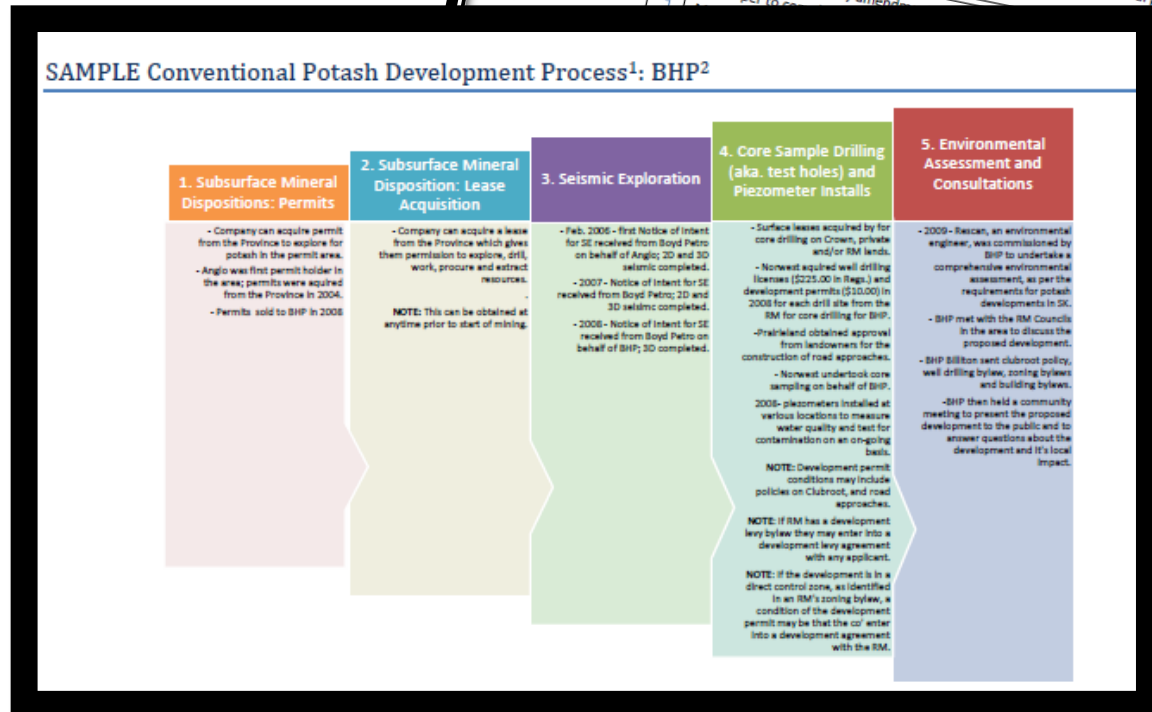
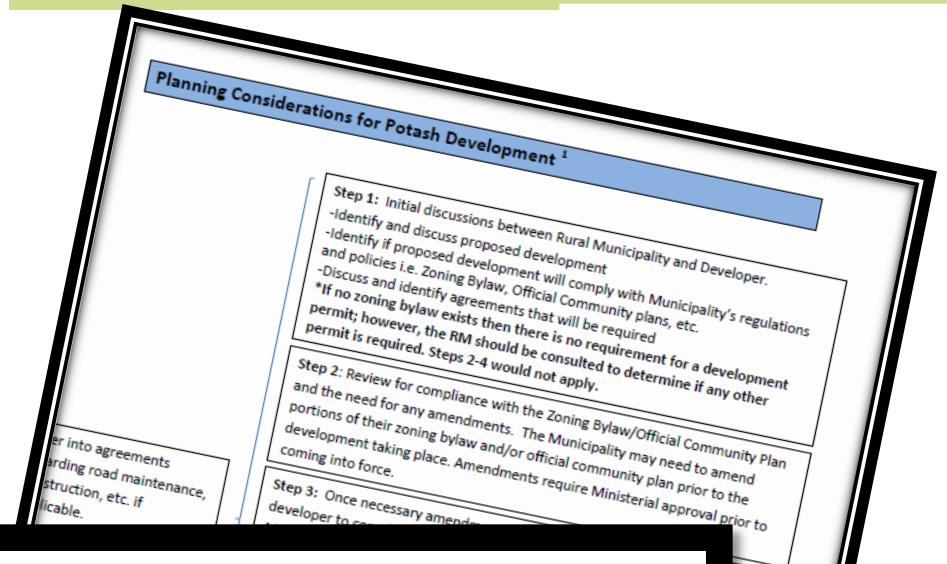
# Online Overweight Permitting

- Identified Need
- Researching our Options
- Partners to Deliver Solution



# Potash Development Resources

- Potash Development Timeline
- Related Reference Materials
- Lobbying Efforts



# Environmental Code

- Big topic at March Convention – Resolutions/Bear Pit!
- Implications for landfills, transfer stations, liquid domestic waste disposal
- SARM has been meeting with SE to define concerns – solutions?
- Results-based = RMs must design to meet requirements.
- Hire proper qualified person = professional engineer
  - ...Come with consulting fee & not located in rural areas...



# Environmental Code

- Great for large company or large urban... Have a QP and won't need a SE permit.
- Big challenge for small municipalities and businesses.
- Don't have a QP or financial resources to contract with one.
- Code paints all project proponents with the same brush...  
...Higher standards don't protect the environment unless they are equally attainable by all!...



# Environmental Code : Landfills/Transfer Stations

- SARM needed the code to recognize these capacity issues.
- In response SE offered the following:
  - To wave the QP requirement for landfills/transfer stations serving less than 750 persons.
  - SARM is questioning that number – is it high enough?
  - Reason – do those serving more than 750 persons have the necessary capacity (financial/human resource)?



# Environmental Code : Landfills/Transfer Stations

- Existing landfills/transfer stations serving more than 750 will:
  - Have to follow new code; even if established 70 years ago.
  - Established under old rules and likely not engineered.
  - They will have 5 years to ensure proper plans are drafted and put in place to meet the new code (require QP).
  - These things are going to cost money; increase operating costs.



# Environmental Code

- Landfills/transfer stations serve a very important purpose...
  - Dispose of refuse in a coordinated manner = less impact on Env't
  - Don't want code to increase operation costs/dumping fees to unrealistic levels.
  - Last thing we want is more public dumping on rural back roads or landfills closing....
  - Not good for municipalities or environment!



## Environmental Code

- SE has offered to have the 750 persons be a temporary number.
- Review it over the course of 5 years after implementation.

**What do RMs think – is 750 persons a good place to start.  
If not can you help us justify another number?**





# Environmental Code :Liquid Domestic Waste Disposal

- Phasing out of land spreading of domestic septic effluent
- Resulting in need for more lagoon capacity.
- Where will money come from to build or expand lagoons?
- Now SE is proposing to continue to allow land spreading on ag land with no expiry date – no need for increased lagoon capacity.
- Only requirement would be for haulers to register.
- SARM happy with this proposed change.

**Any concerns from members? Let us know.**



# Environmental Code : Communications

- Need for improved communications
- Develop one page fact sheets with best practices, contacts at SE
- Enforcement - Cooperate to make changes – not fines first!
- Municipalities often want to comply – need an opportunity, guidance.
- SARM is now part of Code Development Committee
- Will make sure we are involved in other chapters
  - Wildfire, work in or near water...



# Environmental Code

- SE will be here this afternoon presenting on the new code.
- If you have any further concerns after they present – please let us know.
- SARM is worried about cost/liability implications of the code for RMs so we are trying to do what we can to push for changes.
- For more information please see <http://www.environment.gov.sk.ca/Code>



# MMRP

- Following development of Multi-Material Recycling Program (MMRP)
- Many municipalities run programs - fully paid by ratepayers.
- New regulations: Household Packaging and Paper Stewardship Program
- Require businesses selling recyclable packages and paper to finance up to 75% of the cost of municipal recycling programs for household waste.



# MMRP

- Program will fund recycling programs that target the following materials:
- Packaging composed of glass, metal, paper, boxboard, cardboard, paper fibre or plastic or any combination of.
- Paper including flyers, brochures, catalogues, newspapers, paper used for copying, writing or other general use.
- It doesn't include those in *The Litter Control Act* (pop cans, plastic bottles)



# MMRP

- Businesses and companies = Stewards
- Including: Kraft, P&G, Costco, Walmart
- Those that put their logo on pamphlets, bills, newsletters and mail them to households (ie. SaskPower, SARM, municipalities)
- Even RMs could be considered a steward if they mail enough paper to residents.
- Threshold to be set – in other provinces it excludes smaller municipalities/businesses.



# Legislative Review

- *Navigable Waters Protection Act*
- *Fisheries Act*
- A Review of Safety Measures at Rail and Roadway Crossings
- *The Occupational Health and Safety Act*
- *The Workers Compensation Act*
- A Review of Labour Legislation in Saskatchewan
- *The Local Government Elections Act*



## Legislative Review Cont'd...

- *The Assessment Management Agency Act*
- *The Regional Parks Act*
- The Veterinary Services Act
- Saskatchewan Used Oil Collection Regulations
- Species at Risk Act
- The Provincial Water Strategy
- Saskatchewan Environmental Code





## Legislative Review Cont'd...

- The proposed Wildfire Act
- *The Municipalities Act and Regulations*
- *The Canada Grain Act*
- The Fair Rail Freight Services Act
- Multi-Material Recycling Program Regulations
- *The Surface Rights and Acquisition Compensation Act*



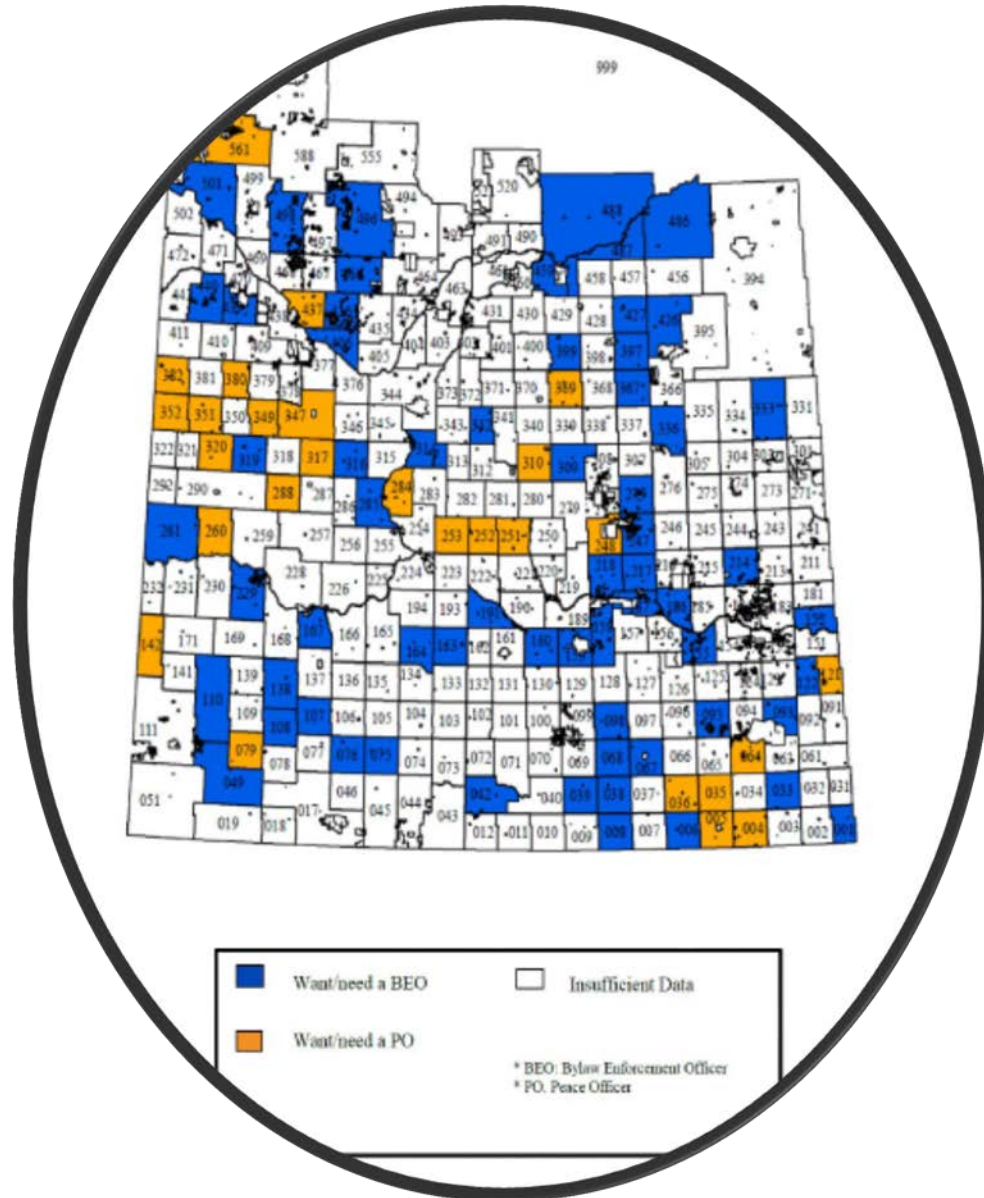
# Bylaw Enforcement

- Resolution No. 3-12A
- Member Survey
- Alternative Enforcement Options



# Member Survey

- 164 RMs responded
- 21% with BEO
- 55% want enforcement



# Alternative Enforcement Options

- Regional BEO
- Special Constables
- Enhanced RCMP



# Tools to Help Manage and Prevent Clubroot in Your RM



## Why is SARM Involved?

Be It Resolved that SARM strongly urge the Provincial Government to add clubroot to the list of pests that are governed via *The Pest Control Act* in Saskatchewan, and to devise and enact a provincial clubroot management plan, so municipalities have the necessary regulations in place to enforce management and sanitation measures to prevent the spread of clubroot to soils in their area.

## Clubroot was added to *the Act*...

- In 2009 Clubroot was added to the *Pest Control Act* which states:
  - Every person shall take measures to destroy clubroot
  - That municipalities, by way of a municipally appointed officer, enforce *the Act*.

## Abilities the Act Gives RMs....

- To appoint a municipal officer to enforce
- To pass bylaws/impose policies



## Abilities *the Act* Gives An Officer...

- To undertake random field inspections
- To enter agreement with an affected landowner that outlines an acceptable management plan
  - If plan isn't followed officer issues an order.
  - If order isn't followed, officer undertakes the order.
  - RM can recoup costs via taxes.

## SARM's Recommendations...

- SARM Legal, Planning and Policy staff looked over the Act and prepared a package that was emailed out to all RMs to help them better manage their duties under the Act...
- This package was emailed to all RMs again in May this year as a reminder and included the following recommendations:

## SARM's Recommendations...

- Please read the entire Pest Control Act before enacting any bylaws or policies...
- The Act already affords RMs certain powers so duplication through bylaws isn't required.

## SARM's Recommendations...

- One thing missing is the requirement of a landowner to notify the RM if clubroot is found on their land.
- SARM drafted a sample bylaw that would impose this requirement.

## SARM's Recommendations...

- SARM also drafted a sample policy
- It takes into account the recommendations from the SCI management plan and outlines steps your council can take to manage clubroot.
- SARM also drafted a template letter to ratepayers based on the bylaw and policy.

## Handout....

- I put a handout on the back table
- Summarizes where to find more information on clubroot and the templates.

## For Documents and More Info...

- Contact me Laurel Feltin, 306-761-3733 or [lfeltin@sarm.ca](mailto:lfeltin@sarm.ca)
- See website at [www.sarm.ca/publications/guides\\_manuals](http://www.sarm.ca/publications/guides_manuals)
- Or just phone the SARM Office.

# Questions and Discussion







**THANK YOU!!!**